



Presses & Automation
SINCE 1975



AZ2
Double point gap press



AZ2

Double Point GAP PRESS



Standard features

- Motorized Shut height Adjustment with digital display
- Several controller options
- OMPI Air-Clutch unit (wet clutch as optional features)
- Ross Dual safety Valve
- Air lock-out
- Showa Seiki Fast acting Hydraulic Overload
- ABB Variable Speed drive optional
- UL Certified control panel (MEETS OSHA & CSA Regulations)
- Automatic Greasing system (automatic oiling system optional)

Optional features

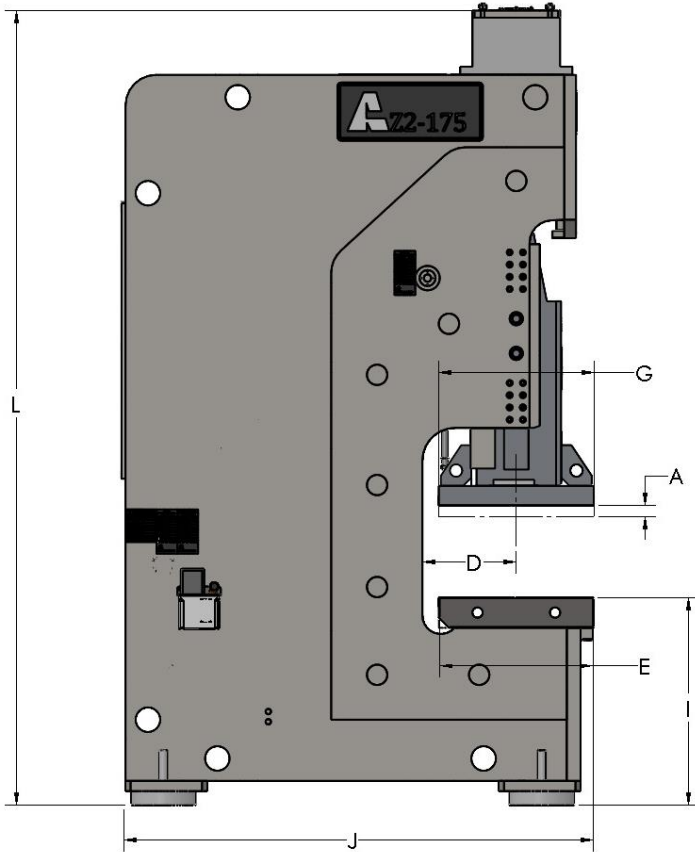
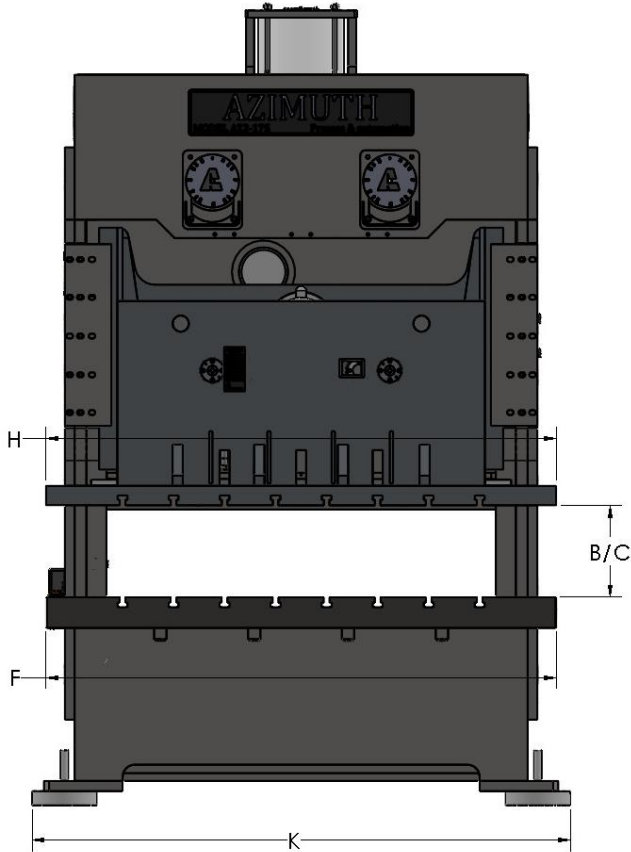
- Servo motorized shut height
- Hydraulic clamping unit
- Tonnage monitoring
- Custom safety guarding meeting latest regulation
- Die cushion system
- Servo feed system
- Custom dimensions (stroke, bed, frame)
- Automatic recirculating oiling system





AZ2

Double Point GAP PRESS



PARAMETERS	DIMENSIONS	Unit	AZ2-80		AZ2-110		AZ2-175		AZ2-220		AZ2-275		AZ2-340	
			LS	SS	LS	SS	LS	SS	LS	SS	LS	SS	LS	SS
Type		Tons	90		124		180		225		281		354	
Nominal Capacity		in	0.20	0.12	0.20	0.12	0.24	0.12	0.28	0.12	0.28	0.14	0.28	0.14
Nominal Stroke	A	in	6.30	3.54	7.09	4.33	7.87	5.12	9.84	5.91	11.02	6.69	11.81	6.69
Slide Stroke Length		SPM	40-70	55-90	30-60	50-80	25-50	40-65	25-50	35-55	20-40	30-45	20-40	30-40
SPM		in	13.78		15.75		17.72		19.69		21.65		21.65	
Max. Die Set Height	B	in	3.15		3.94		3.94		4.33		4.72		4.72	
Die Height Adjustment		in	10.63		11.81		13.78		15.35		16.93		16.93	
Min. Die Height	C	in	12.20		13.78		15.35		16.93		18.50		18.90	
Throat Depth	D	in	47.24		57.09		62.99		79.53		87.40		87.40	
Distance between		in	18.11		20.47		22.83		25.59		27.56		27.56	
Ram Size	F x B	in	47.24		53.54		59.06		74.80		82.68		82.68	
	L x R	in	2.36		2.36		2.36		2.36		2.36		2.36	
Shank Hole Size	Dia.	in	2.36		2.76		2.95		3.35		3.74		3.74	
	Depth	in	23.62		26.77		29.92		33.07		36.22		37.01	
Bolster Size	F x B	in	62.99		74.02		80.31		95.28		106.30		114.17	
	L x R	in	35.4		36.8		35.4		36.8		37.4		38.8	
Bolster surface height	I	in	70.08		71.26		85.24		93.90		104.13		106.30	
Overall Size	F x B	in	70.08		81.10		86.61		105.51		117.32		117.32	
	L x R	in	125.59		129.92		101.97		161.81		173.23		179.72	
	H	in	14.8		14.8		20.1		24.8		29.5		40.2	
Motor Power		hp												
Voltage			480VAC-3PH											
Weight		lbs	27558		30865		41888		58422		88185		103617	



Optional safety guards

Azimuth will customize the safety guards to suit your operations and design them around your current equipment.

This approach ensures that the guards integrate seamlessly with your existing machinery, enhancing safety without disrupting your workflow. Azimuth's tailored solutions help optimize both protection and productivity in your workplace



UL listed control panel

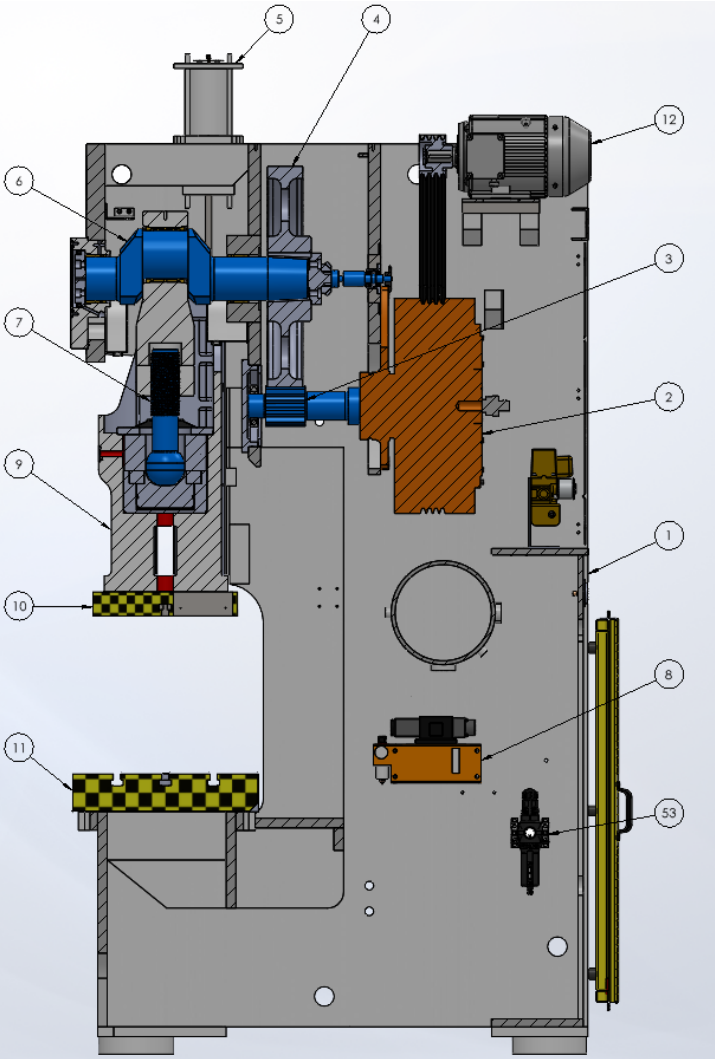
Azimuth is a UL-certified panel builder specializing in the stamping industry. This certification ensures that our control panels meet stringent safety and quality standards, providing reliable and compliant solutions for your operations.

We customize enclosures specifically for sheet metal applications, ensuring seamless integration with your existing equipment and processes.

Our tailored designs enhance both safety and efficiency in your stamping operations.



Main drive-train



1	Frame
2	Flywheel, Clutch & Brake
3	Pinion drive shaft
4	Main gear
5	Counter balance
6	Crankshaft
7	Ram adjustment screw
8	Hydraulic overload
9	Ram
10	Ram plate
11	Bolster plate
12	AC Motor

Azimuth's main drive train is engineered for durability and precision. It includes a primary motor that powers the flywheel, incorporating an inertia clutch for efficient energy transfer.

Activating the main Dual-Safety Valve (DSV) from the press control sends air through the main clutch shaft, engaging the lining with the rotating flywheel for smooth operation.

The press is equipped with a robust oil-immersed gearbox with precision-grounded gears, which enhances performance and minimizes wear.

Additionally, the forged crankshaft, made from high-strength steel, is designed for extended durability, ensuring long-term reliability of the machine.



OMPI Air-friction Clutch

Azimuth integrates OMPI air-friction clutches into all its AZ models, ensuring reliable and efficient performance. OMPI specializes in the development, certification, and global distribution of press-fit devices, torque and power adjustment mechanisms, and clutch/brake units.

Their products are designed for presses and drive assemblies, often featuring flywheels, reduction gearboxes, and rotary unions. [Ompi Srl](#)

This collaboration between Azimuth and OMPI enhances the operational efficiency and safety of the AZ models.



Hydraulic overload protection

The fast-acting Hydraulic Overload Pump (H.O.L.P) in Azimuth's systems is designed to prevent hydraulic overloads caused by incorrect setups or part stacking.

Each unit undergoes precise adjustments at our facility using advanced load-cell technology, ensuring accuracy and reliability.

This hydraulic overload system is rigorously tested multiple times before shipment, effectively reducing the risk of misapplication and enhancing equipment protection.



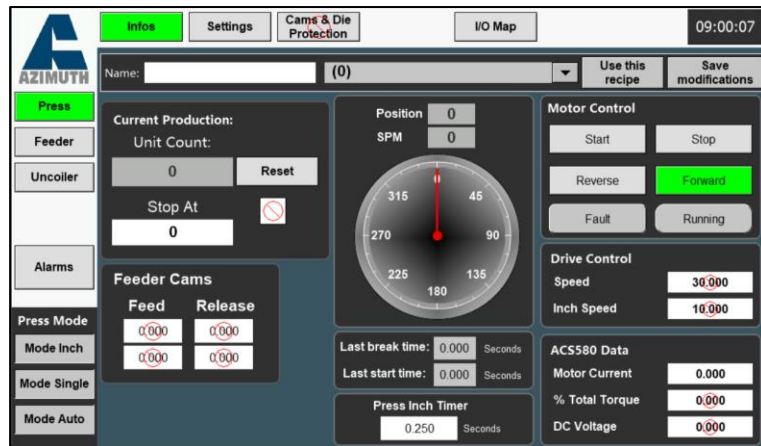
AZIMUTH'S PRESS CONTROL – PLC BASED CONTROLLER

Azimuth' PLC BASED CONTROLLER features a large color touch screen, advanced communications, with 4.0 capabilities.



- The large, vibrant touch screen displays an overview of the equipment or complete line, allowing you easy access to individual equipment setting pages by clicking on their respective representations.
- The home page can also display production statistics ; press operation mode, cycle counter, alarm counter, grease cycle & more.
- Home page can be customized to client's preferences and specific requirements.

- Press information page display key information related to the press operation : position, speed, previous cycle braking and start time, motor control, etc.
- Press settings pages allow for quick modifications in press homing position, stop angle, CAMS and die protections and lubrication settings.



- Press recipe builder allows you to save settings (normally used for different tooling preset)
- Up to 16 recipes (each with 16 local programmable CAMS outputs)
- Up to 16 global programmable CAMS outputs
- I/O lists allows you to easily troubleshoot the system
- Lube control for greasing system



Warranty Plan on AZ models

5

Years on air-clutch & electrical components

Azimuth machinery warrants to the original purchaser, to repair or, at AZIMUTH MACHINERY'S sole option, replace any major frame, crown, bed, upright or slide (machine casting or weldment), Air-clutch, seals & ALL Electrical components (greaser, oiler, motor, main controller, press encoder) after examination by AZIMUTH MACHINERY's properly authorized representative, to be defective in material or workmanship under normal use within three years or, if sooner, **6,000 hours** of running time after the original date of shipment from the AZIMUTH MACHINERY plant.

Does not include labor^[1] or diagnostic work. The original purchaser will be responsible for travel costs and expenses.

3

Years mechanical parts warranty

Azimuth machinery warrants to the original purchaser, to repair or, at AZIMUTH MACHINERY'S sole option, replace any parts that are found defective(Ballscrew, pitman(s),crankshaft(s), slide, GIBS, RAM) after examination by AZIMUTH MACHINERY's properly authorized representative, to be defective in material or workmanship under normal use within three years or, if sooner, **4,000 hours** of running time after the original date of shipment from the AZIMUTH MACHINERY plant.

Does not include labor or diagnostic work. The original purchaser will be responsible for travel costs and expenses.

1

Year on Hydraulic, pneumatic components & labour.

Azimuth machinery warrants to the original purchaser, to repair or, at AZIMUTH MACHINERY'S sole option, replace any parts that are found defective(hydraulic clampers (if furnished), hydraulic components, motors, air-counter balance & all others air components & hydraulic components) after examination by AZIMUTH MACHINERY's properly authorized representative, to be defective in material or workmanship under normal use within three years or, if sooner, **3,000 hours** of running time after the original date of shipment from the AZIMUTH MACHINERY plant.

Labour time warranty shall be under Azimuth Sole discretion. If any Workmanship is required due to improper functioning of the press &/or other related equipment, Azimuth will cover the workmanship repair cost. Travelling fees, lodging & other travelling expense are not included.





Presses & Automation

SINCE 1975

www.azimuthpress.com



Feed-line

We excel in providing turnkey solutions with our custom servo feeding systems, designed to accommodate a wide range of materials—from thin sheets to automotive-grade thicknesses. Our dedicated approach ensures that each system is tailored to meet your specific production requirements, enhancing efficiency and performance.

Turn-key solution

At Azimuth, we specialize in creating customized production lines tailored to your exact specifications. Simply send us your part drawings, and our experienced team will develop a solution designed to maximize efficiency and elevate performance across your operations. As part of our commitment to quality, we'll rigorously test and run your production setup before shipment, ensuring flawless installation and seamless integration when it reaches you.



We are committed to delivering high-quality, innovative automation solutions tailored specifically for the stamping industry. Our UL certification underscores our dedication to safety and excellence, ensuring that our custom-built systems meet the highest industry standards.